

# Labour force

April 2024 | Economic brief

The ABS has implemented improvements to the labour force estimation method. Refer to 'Revisions to the Territory labour force data' on page 3 for more information.

## Seasonally adjusted

	NT	Aust
Employed persons	138 207	14 299 978
- Monthly change	↓1.0%	↑0.3%
- Annual change	flat	↑2.8%
- Year-on-year change	↑1.1%	↑3.0%
Unemployment rate	4.1%	4.1%
Participation rate	72.8%	66.7%

In April 2024, employment in the Territory decreased by 1.0% to 138,207 persons. Part-time employment decreased by 2.2% and full-time employment decreased by 0.7%. Nationally, employment increased by 0.3%, with part-time employment increasing by 1.0%, partly offset by full-time employment decreasing by 0.1%.

Annually<sup>†</sup>, employment was flat in the Territory (Chart 1). In the year to April 2024<sup>‡</sup>, Territory employment increased by 1.1%, reflecting an increase in full-time employment of 2.4%, partly offset by a decrease in part-time employment of 3.6%.

In April 2024, the Territory's unemployment rate increased by 0.3 percentage points (ppt) to 4.1% (Chart 2). Nationally, the monthly unemployment increased by 0.2 ppt to 4.1%. The participation rate in the Territory decreased by 0.6 ppt to 72.8%. This is the highest rate of the jurisdictions, and well above the national rate of 66.7%.

## Trend

	NT	Aust
Employed persons	139 457	14 289 564
- Monthly change	↑0.3%	↑0.2%
- Annual change	↑1.9%	↑2.5%
Unemployment rate	4.1%	4.0%
Participation rate	73.6%	66.7%

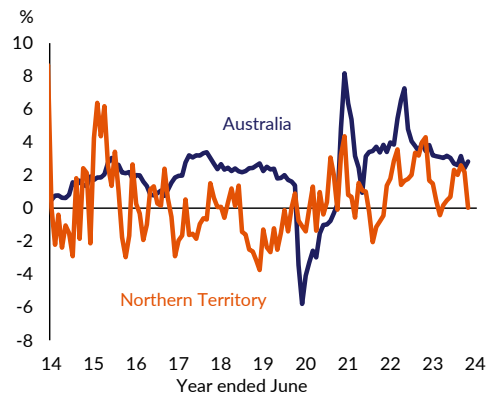
In April 2024, employment in the Territory increased by 0.3% to 139,457 persons. Part-time employment increased by 0.9% and full-time employment increased by 0.1%. Annually<sup>†</sup>, employment increased by 1.9% in the Territory (Chart 3).

In April 2024, the Territory's unemployment rate decreased by 0.1 ppt to 4.1%. The participation rate in the Territory was flat at 73.6%.

<sup>†</sup> Compares the latest month with the same month in the previous year.

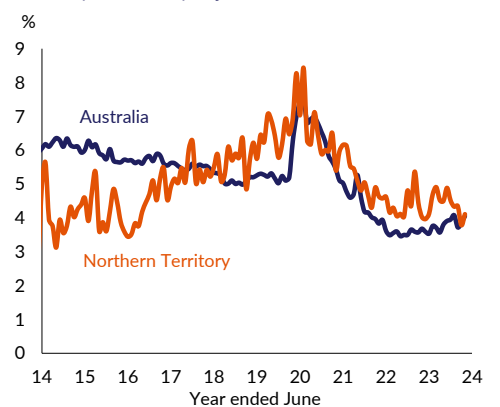
<sup>‡</sup> Compares the 12 months up to the latest month with the previous 12 months.

Chart 1: Employment change (annual, seasonally adjusted)



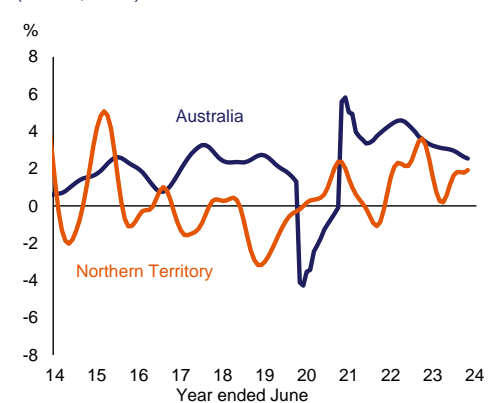
Source: Department of Treasury and Finance, ABS Cat No. 6202.0

Chart 2: Unemployment rate (monthly, seasonally adjusted)



Source: Department of Treasury and Finance, ABS Cat No. 6202.0

Chart 3: Employment change (annual, trend)



Source: Department of Treasury and Finance, ABS Cat No. 6202.0

Table 1: Labour force statistics\*

	Period			Monthly change <sup>1</sup>	Annual change <sup>2</sup>	
	Apr 23	Mar 24	Apr 24	%	%	No.
<b>Northern Territory</b>						
Seasonally adjusted						
Employment	138 163	139 622	138 207	-1.0%	0.0%	44
– full-time	108 804	109 691	108 925	-0.7%	0.1%	121
– part-time	29 359	29 931	29 282	-2.2%	-0.3%	- 77
Unemployment rate	4.0%	3.8%	4.1%	0.3 ppt	0.1 ppt	
– Unemployed	5 799	5 491	5 925	7.9%	2.2%	127
Participation rate	73.5%	73.5%	72.8%	-0.6 ppt	-0.6 ppt	
Labour force	143 961	145 113	144 132	-0.7%	0.1%	171
Trend						
Employment	136 829	139 089	139 457	0.3%	1.9%	2 628
– full-time	107 050	109 619	109 724	0.1%	2.5%	2 674
– part-time	29 779	29 471	29 733	0.9%	-0.2%	- 46
Unemployment rate	4.4%	4.2%	4.1%	-0.1 ppt	-0.2 ppt	
– Unemployed	6 235	6 105	6 035	-1.1%	-3.2%	- 199
Participation rate	73.0%	73.6%	73.6%	0.0 ppt	0.6 ppt	
Labour force	143 064	145 194	145 492	0.2%	1.7%	2 428
<b>Australia</b>						
Seasonally adjusted						
Employment	13 905 663	14 261 500	14 299 978	0.3%	2.8%	394 315
– full-time	9 735 657	9 851 396	9 845 306	-0.1%	1.1%	109 649
– part-time	4 170 005	4 410 104	4 454 671	1.0%	6.8%	284 666
Unemployment rate	3.7%	3.9%	4.1%	0.2 ppt	0.4 ppt	
– Unemployed	531 567	573 899	604 226	5.3%	13.7%	72 659
Participation rate	66.5%	66.6%	66.7%	0.1 ppt	0.2 ppt	
Labour force	14 437 229	14 835 399	14 904 203	0.5%	3.2%	466 974
Trend						
Employment	13 934 338	14 258 673	14 289 564	0.2%	2.5%	355 227
– full-time	9 762 835	9 828 056	9 847 662	0.2%	0.9%	84 827
– part-time	4 171 503	4 430 616	4 441 902	0.3%	6.5%	270 400
Unemployment rate	3.6%	4.0%	4.0%	0.0 ppt	0.4 ppt	
– Unemployed	517 006	588 990	592 848	0.7%	14.7%	75 842
Participation rate	66.6%	66.7%	66.7%	0.0 ppt	0.1 ppt	
Labour force	14 451 343	14 847 663	14 882 413	0.2%	3.0%	431 069

ppt.: percentage point

1 Compares the latest month with the previous month.

2 Compares the latest month with the same month in the previous year.

\* Due to rounding, changes in the table may not reflect the actual change.

Source: Department of Treasury and Finance; ABS Cat. No. 6202.0

Caution is advised when using monthly data for the Territory, as it is often derived from small samples and can be highly volatile. Although due care has been exercised in preparing this material, no responsibility is accepted for any errors or omission.

[Labour force, Australia | Australian Bureau of Statistics \(abs.gov.au\)](https://abs.gov.au)

## More information

Economic Group | Department of Treasury and Finance

P: 08 8999 6718 | E: [economics.dtf@nt.gov.au](mailto:economics.dtf@nt.gov.au) | W: [nteconomy.nt.gov.au](https://nteconomy.nt.gov.au)

## Revisions to the Territory labour force data

Table 1: Revisions to labour force data, 12-month average, January 2024

	Previous data	Current (new method)	Change
Employed persons (number)	140 078	136 233	↓3 845
Unemployment rate (%)	3.9	4.5	↑0.6
Participation rate (%)	74.1	72.7	↓1.4

The ABS has implemented improvements to the labour force estimation method to reduce sample variability and other measurement error for various small groups in the labour force survey. The impact of the new methodology is outlined in Table 1. On average, in the year to January 2024:

- monthly employment was revised down by 3,845 persons
- the unemployment rate was revised up by 0.6 ppt on average
- the participation rate was revised down by 1.4 ppt on average.

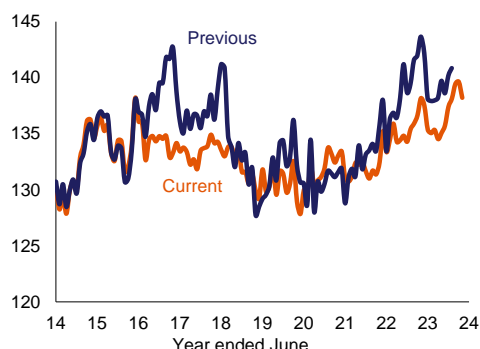
The revised groups include people who do not live in private dwellings (e.g people in prison, living in aged care homes) and some people living in remote and very remote parts of Australia. Revisions have been applied to the estimates dating back to August 2016.

While the revisions are relatively small at the national level and for many jurisdictions, they are considerably larger for the Northern Territory. This is because the difficult-to-enumerate populations account for a higher proportion of the sample in the Northern Territory. An improvement in the estimation of those populations will therefore result in larger relative improvements in the aggregate labour force statistics.

The improved estimation method provides both a more accurate level estimate for the Territory's labour force statistics, and generally reduces the average month-to-month variability in the key indicators (Charts 4, 5 and 6). These changes also flow through to the seasonally adjusted and trend series of the labour force statistics. For most indicators, these revisions reflect a 'level shift' from the previously published estimates to the improved estimates, with the underlying pattern of increases or decreases changes over time being relatively consistent.

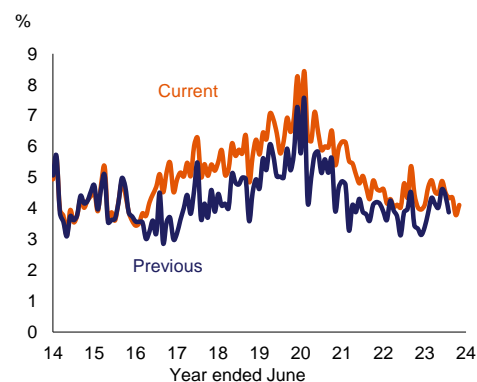
As with any time series revisions, the ABS recommends using the latest available data. For example, comparisons of changes in the unemployment rate for the Territory should use the latest available estimates, and not compare the current and previous economic briefs.

Chart 4: Employed persons  
(monthly, seasonally adjusted)  
Number (000)



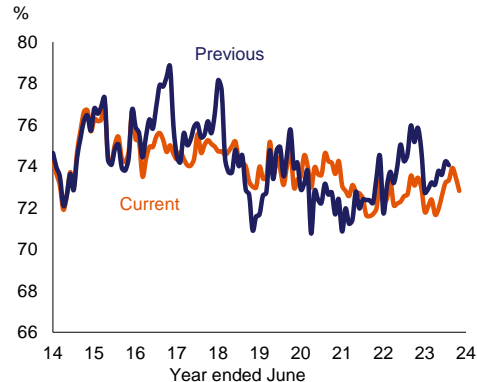
Source: Department of Treasury and Finance, ABS Cat No. 6202.0

Chart 5: Unemployment rate  
(monthly, seasonally adjusted)  
%



Source: Department of Treasury and Finance, ABS Cat No. 6202.0

Chart 6: Participation rate  
(monthly, seasonally adjusted)  
%



Source: Department of Treasury and Finance, ABS Cat No. 6202.0