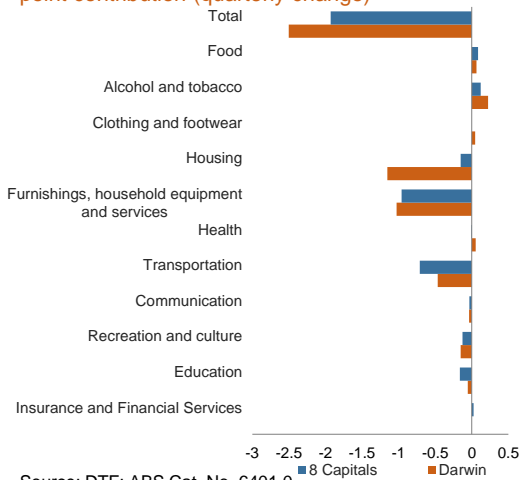


Consumer price index

June quarter 2020

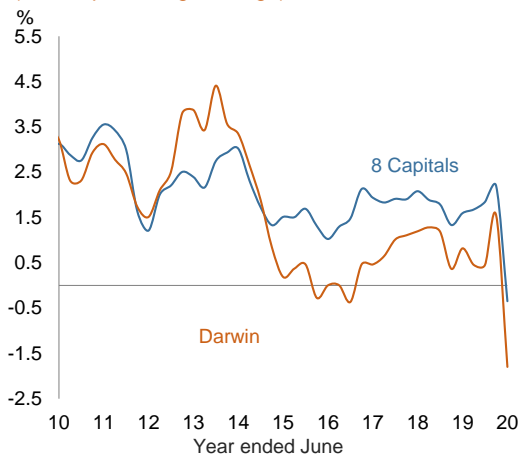
Released: 29 July 2020 | Next release: 28 October 2020

Chart 1: Consumer price index point contribution (quarterly change)



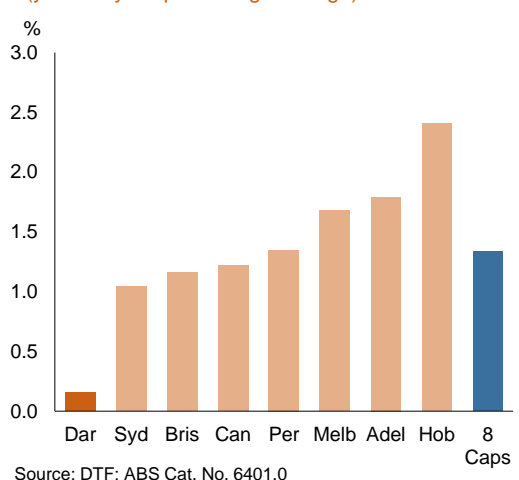
Source: DTF; ABS Cat. No. 6401.0

Chart 2: Consumer price index (annual percentage change)



Source: DTF; ABS Cat. No. 6401.0

Chart 3: Capital cities consumer price index (year-on-year percentage change)



Source: DTF; ABS Cat. No. 6401.0

Due to the impact of COVID-19, the Australian Bureau of Statistics has adopted changes to the measurement of CPI. More detail can be found [here](#). Caution is advised in interpreting the data and analysis.

Consumer price index (CPI)

	Darwin	8 Capital cities
Quarterly change (%)	↓2.5%	↓1.9%
Annual change (%)	↓1.8%	↓0.3%
Year-on-year change (%)	↑0.2%	↑1.3%

Quarterly result

The Darwin CPI decreased by 2.5 per cent in the June quarter 2020. Darwin recorded the lowest quarterly result of the capital cities. The other capital cities ranged from a 2.3 per cent decline in Canberra and Sydney to a decrease of 1.0 per cent in Adelaide. The eight capital cities' average CPI decreased by 1.9 per cent.

The greatest contributions to the quarterly decrease in the Darwin CPI were furnishings, household equipment and services (mainly household services including child care) and housing (Chart 1). This was partly offset by an increase in alcohol and tobacco (mainly tobacco) and clothing and footwear (mainly garments).

Annual result

Through the year to June 2020, Darwin CPI decreased by 1.8 per cent (Chart 2). The categories that recorded the greatest decrease in CPI in Darwin were furnishings, household equipment and services (down 10.7 per cent) and housing (down 6.9 per cent). This was partly offset by increases in CPI for alcohol and tobacco (up 8.9 per cent) and food and non-alcoholic beverages (up 3.8 per cent).

Darwin recorded the lowest change in CPI in annual terms. In other capital cities, the CPI ranged from a decline of 1.0 per cent in Brisbane and Sydney to an increase of 1.3 per cent in Hobart. The eight capital cities' average CPI decreased by 0.3 per cent.

Year-on-year result

The annual average Darwin CPI increased by 0.2 per cent in 2019-20 (Chart 3). The eight capital cities' average CPI increased by 1.3 per cent.

The largest price increases were alcohol and tobacco (up 8.4 per cent), food and non-alcoholic beverages (up 2.8 per cent) and education (up 2.3 per cent). The categories that recorded the largest decreases were insurance and financial services (down 4.3 per cent) and communication (down 3.7 per cent).

Consumer price index June quarter 2020

Table 1: Consumer price index

	June quarter		Change		
	Quarter	Year average	Quarterly ¹	Annual ²	Year-on-year ³
Darwin	109.0	110.9	-2.5%	-1.8%	0.2%
Food and non-alcoholic beverages	111.1	109.6	0.3%	3.8%	2.8%
Alcohol and tobacco	163.4	158.8	1.8%	8.9%	8.4%
Clothing and footwear	93.6	93.1	1.7%	-0.2%	-0.2%
Housing	98.3	103.3	-6.0%	-6.9%	-3.0%
Furnishings, household equipment and services	94.6	103.5	-11.3%	-10.7%	-1.9%
Health	133.3	131.7	1.1%	1.2%	1.7%
Transportation	104.9	109.3	-4.5%	-5.5%	-1.6%
Communication	77.0	78.1	-1.3%	-3.6%	-3.7%
Recreation and culture	101.7	103.9	-1.2%	-3.7%	-0.7%
Education	136.8	136.9	-1.8%	0.9%	2.3%
Insurance and financial services	109.1	109.0	-0.2%	-1.4%	-4.3%
8 Capitals	114.4	115.7	-1.9%	-0.3%	1.3%
Food and non-alcoholic beverages	113.1	111.3	0.5%	4.1%	3.1%
Alcohol and tobacco	164.7	160.4	1.5%	8.4%	7.4%
Clothing and footwear	94.9	95.3	0.1%	0.5%	1.4%
Housing	121.5	121.9	-0.7%	0.1%	0.3%
Furnishings, household equipment and services	93.6	102.1	-11.2%	-9.8%	-1.2%
Health	140.0	139.2	-0.2%	0.9%	2.5%
Transportation	99.3	105.4	-6.8%	-7.5%	-0.4%
Communication	77.6	78.7	-1.3%	-3.6%	-3.7%
Recreation and culture	105.4	106.9	-1.0%	-0.3%	1.1%
Education	134.5	136.6	-3.7%	-1.0%	1.8%
Insurance and financial services	116.4	115.6	0.3%	1.7%	1.1%
RBA underlying measures of inflation					
Weighted median			0.1%	1.3%	
Trimmed mean			-0.1%	1.2%	

Table 2: Consumer price index contribution to change

	June quarter		Change	
	Quarter	Year average	Quarterly ¹	Annual ²
Darwin	109.0	110.9	-2.50 ppt	n.a.
Food and non-alcoholic beverages	111.1	109.6	0.06 ppt	n.a.
Alcohol and tobacco	163.4	158.8	0.22 ppt	n.a.
Clothing and footwear	93.6	93.1	0.04 ppt	n.a.
Housing	98.3	103.3	-1.15 ppt	n.a.
Furnishings, household equipment and services	94.6	103.5	-1.03 ppt	n.a.
Health	133.3	131.7	0.05 ppt	n.a.
Transportation	104.9	109.3	-0.47 ppt	n.a.
Communication	77.0	78.1	-0.04 ppt	n.a.
Recreation and culture	101.7	103.9	-0.15 ppt	n.a.
Education	136.8	136.9	-0.05 ppt	n.a.
Insurance and financial services	109.1	109.0	0.00 ppt	n.a.
8 Capitals	114.4	115.7	-1.89 ppt	n.a.
Food and non-alcoholic beverages	113.1	111.3	0.09 ppt	n.a.
Alcohol and tobacco	164.7	160.4	0.12 ppt	n.a.
Clothing and footwear	94.9	95.3	0.00 ppt	n.a.
Housing	121.5	121.9	-0.15 ppt	n.a.
Furnishings, household equipment and services	93.6	102.1	-0.96 ppt	n.a.
Health	140.0	139.2	-0.01 ppt	n.a.
Transportation	99.3	105.4	-0.71 ppt	n.a.
Communication	77.6	78.7	-0.03 ppt	n.a.
Recreation and culture	105.4	106.9	-0.13 ppt	n.a.
Education	134.5	136.6	-0.16 ppt	n.a.
Insurance and financial services	116.4	115.6	0.03 ppt	n.a.

n.a.: not available

1 Compares the latest quarter with the previous quarter.

2 Compares the latest quarter with the same quarter last year.

3 Compares the 4 quarters up to and including the latest quarter with the previous 4 quarters.

Source: Department of Treasury and Finance; ABS Cat. No. 6401.0

Caution is advised when using quarterly data for the Territory, which is often derived from small samples and highly volatile. Although all due care has been exercised in the preparation of this material, no responsibility is accepted for any errors or omission.

More information:

Economic Group | Department of Treasury and Finance

P: 08 8999 6801 | E: economics.dtf@nt.gov.au | W: <https://nteconomy.nt.gov.au/>